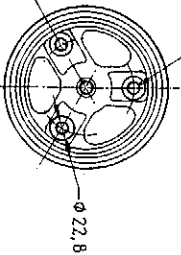
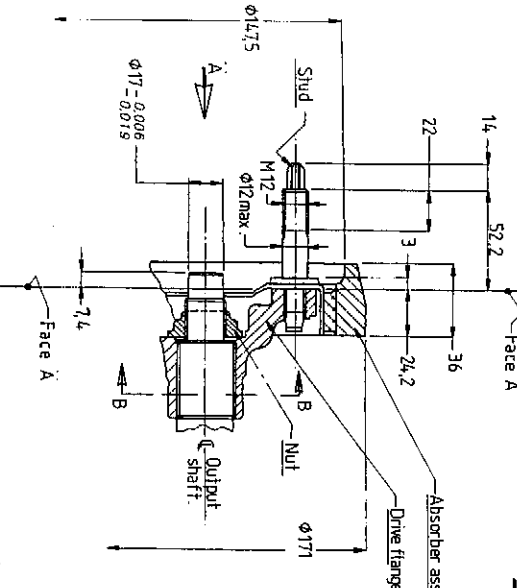


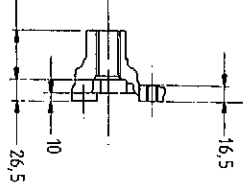
3 Studs M12 Equispaced as shown on a $\phi 96$



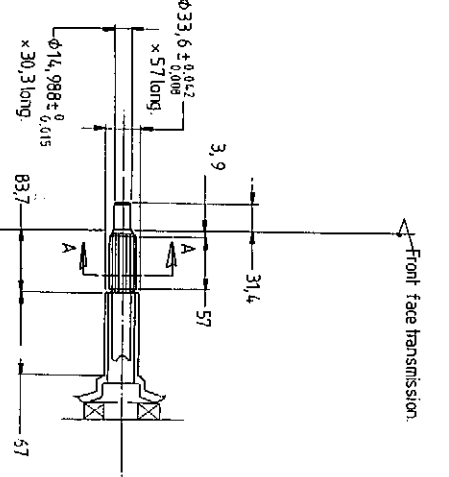
VIEW ON ARROW A - DRIVE FLANGE / ABSORBER ASSY.
(Scale 1:4)



SCRAP SECTION IN CIRCLE (A)

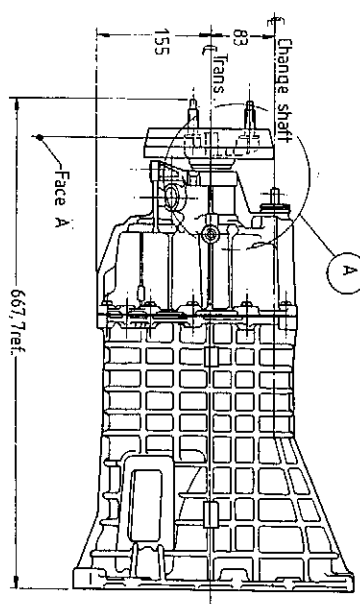


SCRAP SECTION THRO DRIVE FLANGE
(Scale 1:4)

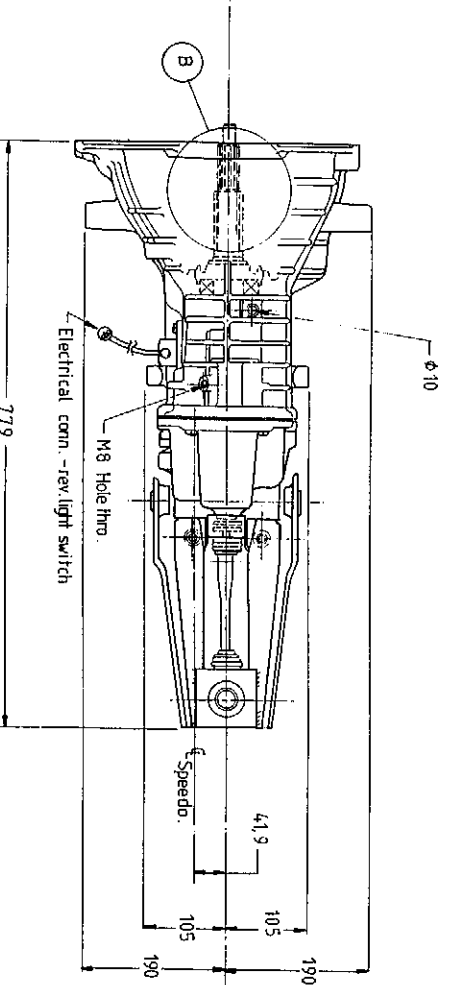
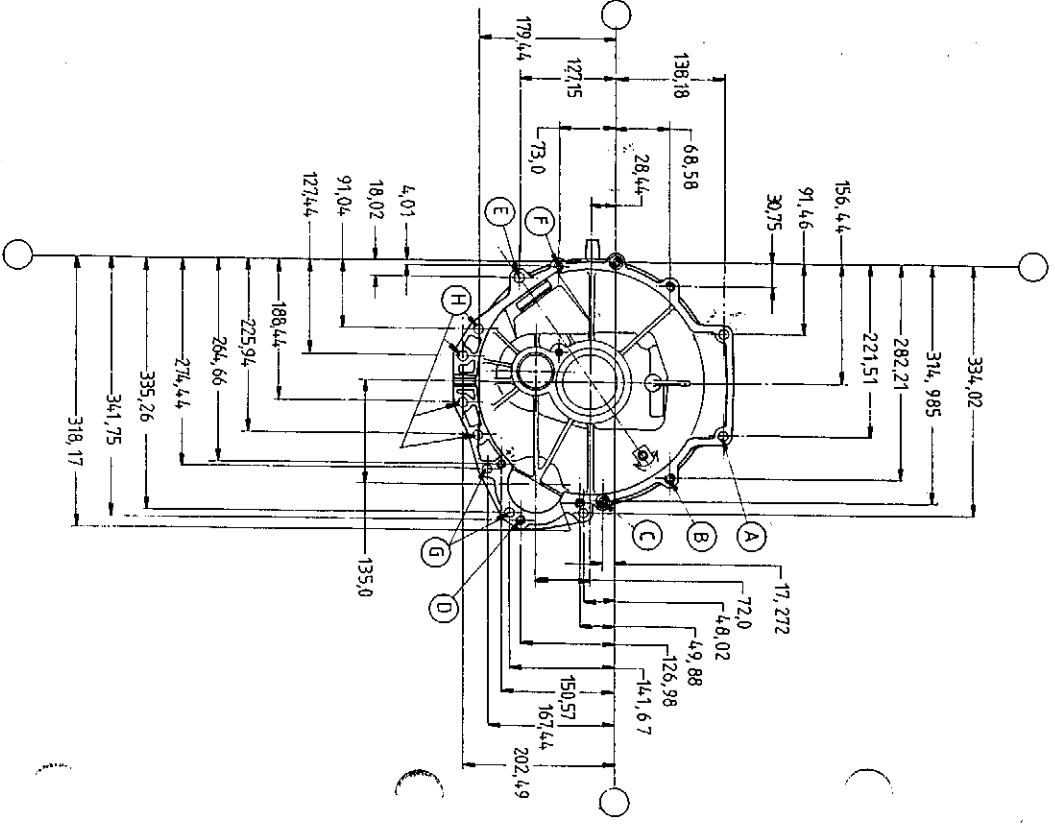


VIEW IN CIRCLE B - INPUT SHAFT
(Scale 1:4)

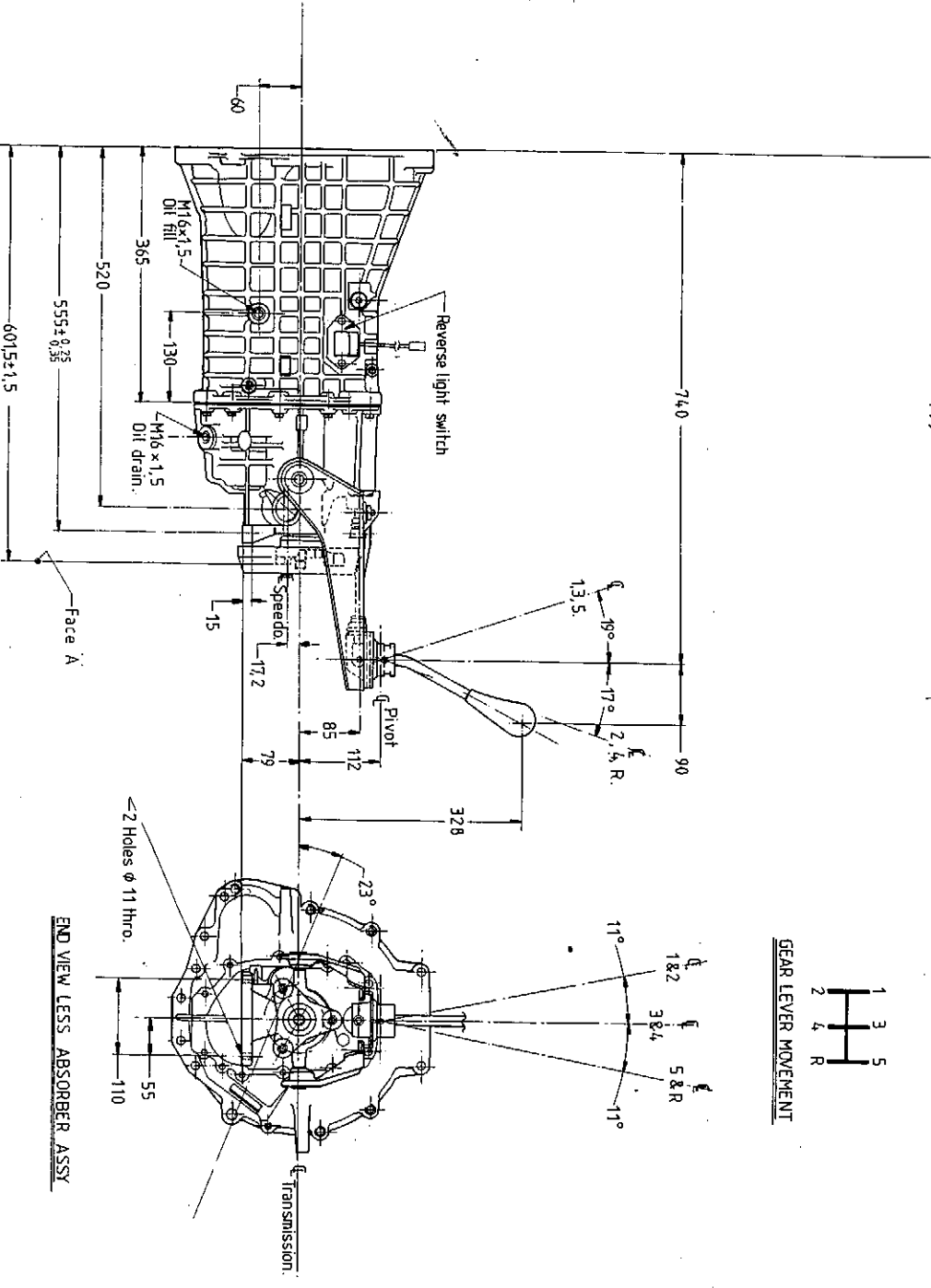
- (A) 2 Holes $\phi 11 \pm 0.25 \times 21.5$ thro.
- (B) 2 Holes $\phi 10 \times 22.5$ thro.
- (C) 2 Holes $\phi 10 \times 25$ thro.
(Bored $\phi 12.75 \pm 0.027 \times 6.6$ deep nom.)
- (D) 3 Holes M10 $\times 22.5$ thro.
Hole marked $\times 25$ deep, 17 full thro.
- (E) 1 Hole $\phi 12.45 \pm 0.25 \times 13$ thro.
- (F) 1 Hole M6
- (G) 3 Holes $\phi 11.5 \pm 0.3 \times 22.5$ thro.
- (H) 4 Holes $\phi 11 \pm 0.25 \times 22.5$ thro.



INVOLUTE SPLINE DATA	
No. of Teeth	23
Module	1.05831 / 0.5292
Pressure Angle	30°
Base ϕ	21.0799
Ref. ϕ	24.341
TIP ϕ	25.639 ± 0.25
Root ϕ	22.839 max.
Tooth thickness	Actual: 1.557 mm, Effective: 1.636 mm
Pin ϕ	2.032
Dimension over pins	27.265 mm
Helix Angle	19° 45' R.H.



Electrical conn. - rev. light switch



END VIEW LESS ABSORBER ASSY



GEAR LEVER MOVEMENT

Gear Ratios

DOHC	1st	2nd	3rd	4th	5th	Rev.
	3.89:1	2.08:1	1.34:1	1.00:1	0.82:1	3.51:1

Dim's are in Millimetres.
3rd. angle projection.



CONFIDENTIAL

VERTRAULICH
10 20 30 40 50 60 70 80 90 100 110 120mm
OBER ANGELEGERER MASSSTAB DIENST NUR ALS BEZUGNAHME
ABOVE SCALE FOR REFERENCE ONLY

REFERENCES: Latest change Jul. 88

DR. DATE Jun. 87 CK APP

NIJCHT ABRUMMEN MASSSTAB 1 : 5 SCALE DO NOT SCALE
PART NAME INSTALLATION - TRANSMISSION ASSY
5 Speed MT 75 for use with DOHC Engines in Sierra (Scorpio)

TEILNUMMER/PART NR. TN1 - 278 - A